



KM

12

**What's new
2D Structural design, 3D virtual
samples and workflow control for
packaging and display**

KASEMAKE is the result of more than 30 years of experience working with the packaging, display and print industry to produce the most complete collection of specialised packaging and display design tools available anywhere.

AG/CAD

New 2D features in KASEMAKE version 12

Each version of KASEMAKE includes thousands of minor tweaks and enhancements to the huge number of functions available to users. Also there are many new ones introduced, some of which work unnoticed in the background and others which improve your productivity and add completely new functionality.

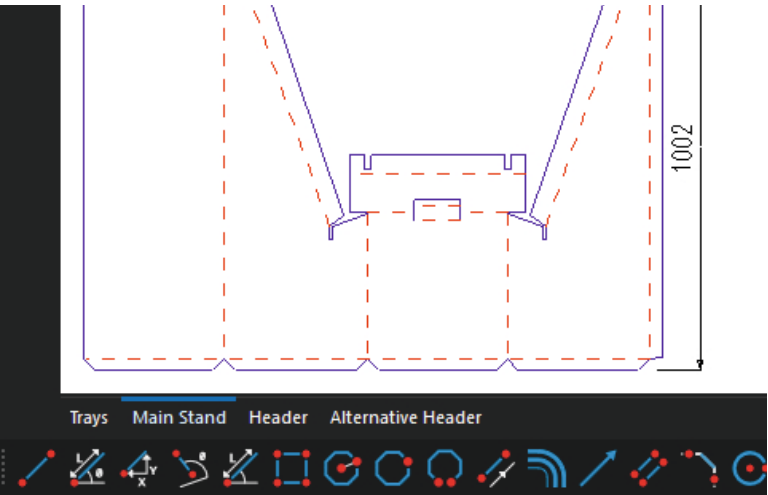
Multipage documents

A KASEMAKE AGD file can now consist of multiple pages, allowing designers to have fitments and outer components, or parts of an FSDU for example, on separate pages all contained within the same document.

3D scenes are also now additional pages in the same document. This enables a simpler way of organising the component parts of a project.

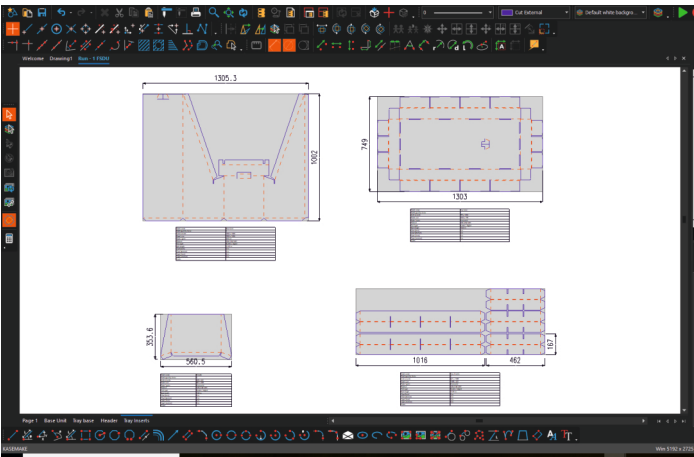
Pages can be selected by clicking customisable tabs at the bottom of the document.

Each page is referenced separately in the database, with its own preview and page specific measurements, style and material information. This makes management of multiple part projects simple.



Sheets

Sheets are a new feature in KASEMAKE 12 which allows the information pertaining to many elements to be contained on one page of a drawing.



POS designers often work in this way, as do other disciplines. One of the main advantages of using sheets is that designers and others involved in the production of the item can see at a glance the salient features of an element, such as sheet size, material and machine route. All the information

in the sheet is contained in the KASEMAKE SQL database and can be viewed, exported and filtered in many ways. Each sheet has its own section within the database record for the job or document.

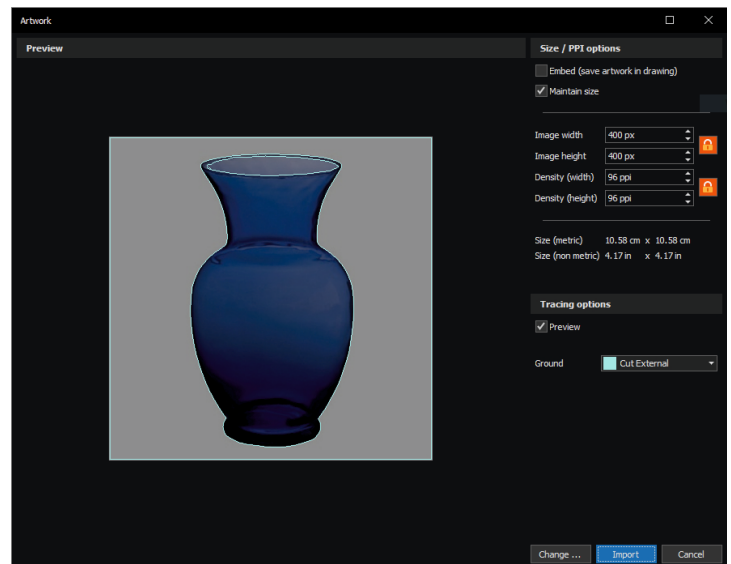
Items can be re-sheeted if the specification changes and also a sheet can be completely removed if desired. The fields that you choose to include on your sheets are user configurable in the preferences. All sheeted elements also appear on their own sub page in the drawing document.

Sheet name	Header
Sheet quantity factor	1
Knife to knife	358 x 561
Sheet size	561 x 358
Flute / grain	Horizontal
Material	125LT/B/125T
Print type	Screen / digital
Rule length	2.54 m
Glue (face)	0 m
Glue (reverse)	0 m
Tape (face)	0 m
Tape (reverse)	0 m
Notes	

Close up of sheet info grid

Artwork tracing tool

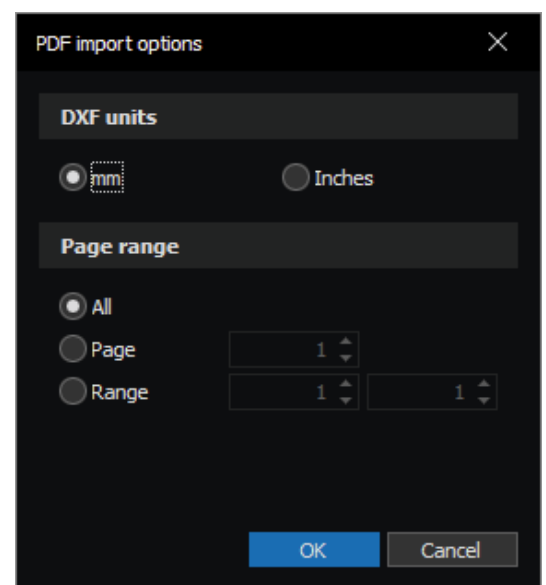
Have you ever brought an image into KASEMAKE and used the drawing tools to trace around the edge of it, for example to create a fitment for an item? Now you don't have to, you can import an image using the Trace Artwork tool and KASEMAKE will automatically detect any edges in the image and trace around them, giving you an accurate path around the object ready for you to build into your design. Over a few weeks this tool could save you many hours of painstaking drawing and tracing.



Importing of multi-page 2D PDFs

Many PDFs sent from artwork departments consist of multiple pages, and one or more of these may contain the cutting path information you need. In V12 you can choose which pages you want KASEMAKE to import from the document, and KASEMAKE will create a separate page within the drawing for each page that is imported.

Your Design PCs no longer needs Acrobat Pro, or PDF splitting utilities as KASEMAKE 12 does all this for you. This function will increase your productivity considerably.

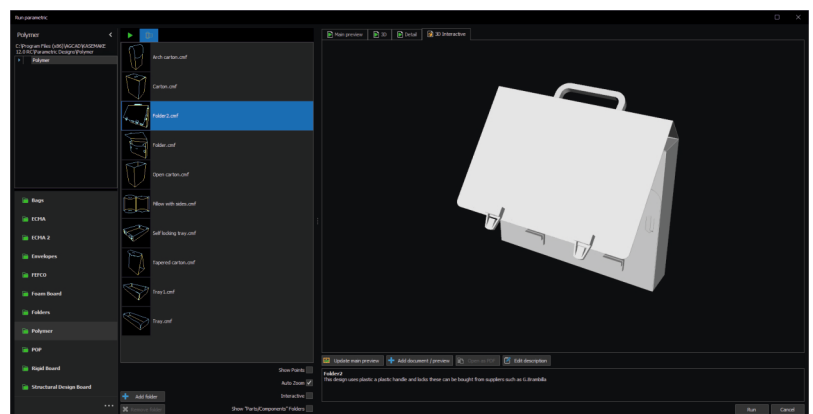


Additional parametrics

The parametric library is always evolving and growing to take into account new flutes and new materials.

Our FEFCO library has been completely rewritten for V12, taking into account customer feedback and other information that has led to more intuitive designs which are automatically optimised for production.

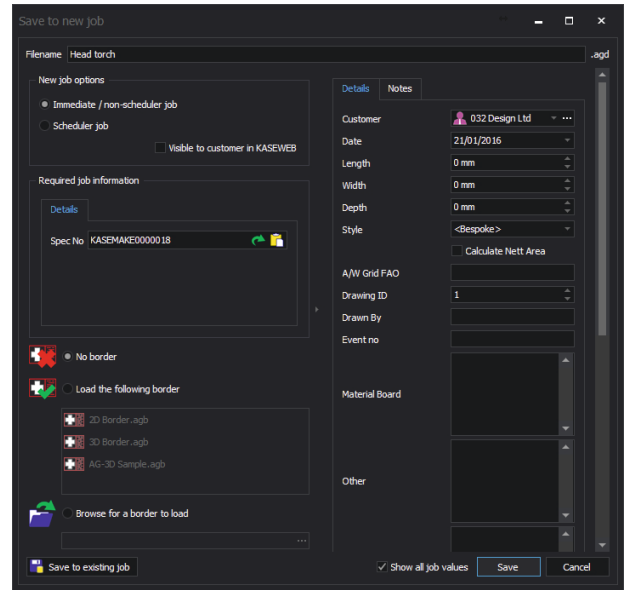
Also in V12 we have new sections in the style libraries for rigid board designs and styles for polymers and plastics.



Integral SQL database

We have further developed our comprehensive and highly configurable SQL database system for KASEMAKE 12, adding a whole new level of functionality. The SQL database is very robust and powerful with integral security and user privilege features. SQL is capable of handling vast amounts of data which makes it suitable for all businesses from small companies to global multi-site enterprises.

Additional features include job management and scheduling; revision histories; handling of multi-part jobs; potential for connectivity to business systems; ability to attach supporting documents to any job, for example photos, Word, PDF and spreadsheet documents; and much more.



Workflow and scheduling

Communication between design and your sales, production and management departments needs to be as efficient and dynamic as possible. KASEMAKE 12 now has built-in features as standard to help.

KASELINXCREATE is a standalone application that is used to create job requests. It can be used by any of your staff at your premises, or potentially your sales reps can use it on a customer site to capture enquiries there and then.

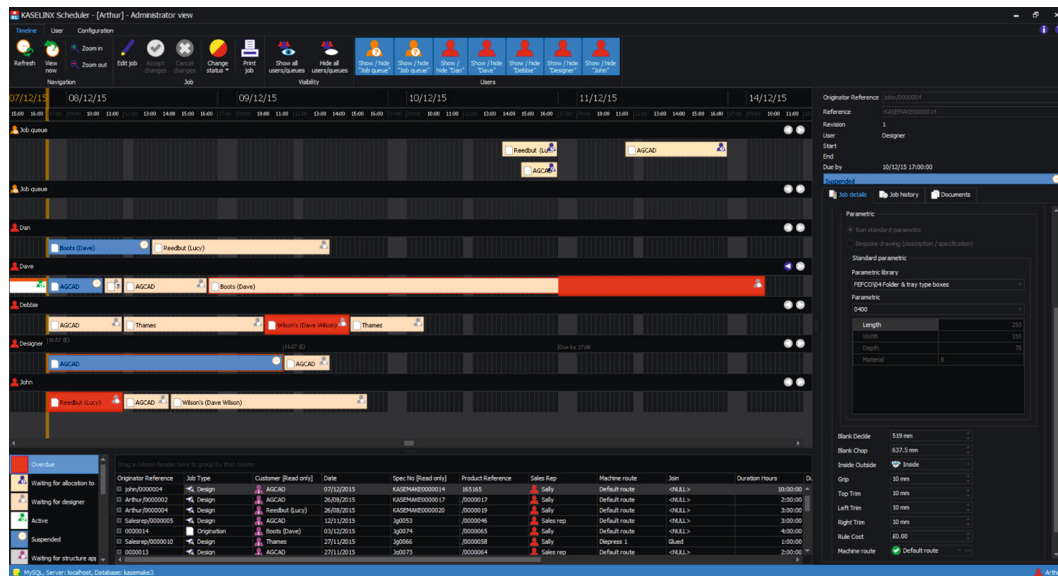
KASELINXSCHEDULER is the heart of the KASELINX system and provides a visual planner that a design manager or administrator can view to check details of existing or newly submitted jobs. They can add notes and relevant information to each job if necessary and then assign to individual designers.

When a job has been allocated to a designer, it will appear in the designer's job queue waiting to be actioned. After starting a job from the queue, the

designer can flag changes in job status as work progresses. This means anyone with access to the scheduler timeline can immediately see what stage the job is at. All status changes, comments, etc. are logged and date stamped for quality assurance purposes.

With the optional KASEWEB module (see connectivity modules below) a job flagged for customer feedback or approval is made available online allowing the customer to log-in, make comments and approve or reject the job, which updates the status in the scheduler.

The KASELINX system, when combined with KASEMAKE provides powerful workflow and project management. This can be further enhanced by KASEWEB to allow more efficient job approval and improve customer experience.

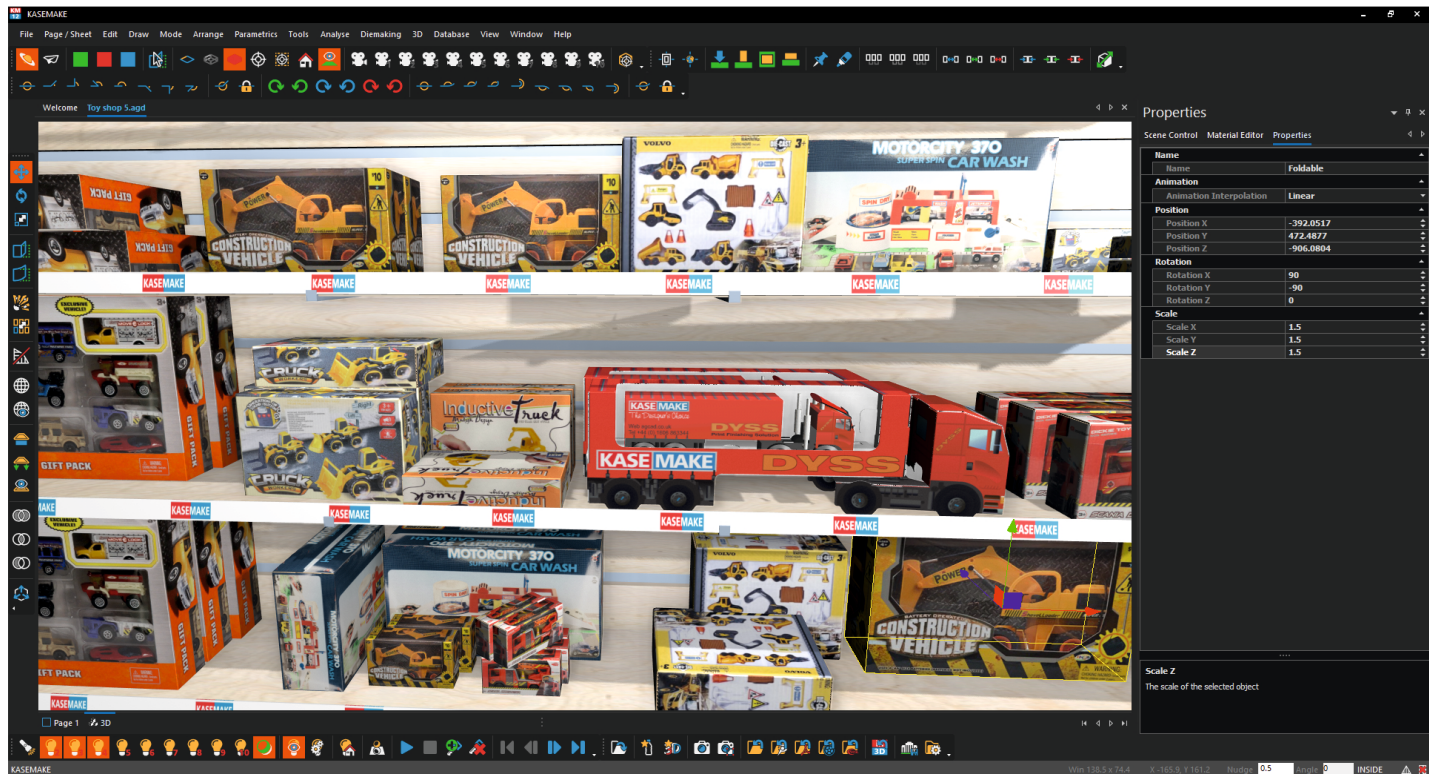


New KASEMAKE 12 3D tools

The KASEMAKE 3D environment has been completely rewritten from the ground up. Using advanced material and rendering techniques, KASEMAKE's 3D module now enables you to generate fantastic, realistic 3D virtual samples quickly and without the need to use external rendering software such as POV-RAY, although KASEMAKE does still support this. Finished 2D CAD projects can have artwork added to them and then be brought into the 3D environment,

where further work can be done. Flooring, walls and shelving etc can all be added by using an advanced collection of object creation tools.

Materials can be applied to all the elements of a drawing. Sophisticated shadow and lighting effects enable you to make the scene highly realistic, ready for export in a vast number of formats.



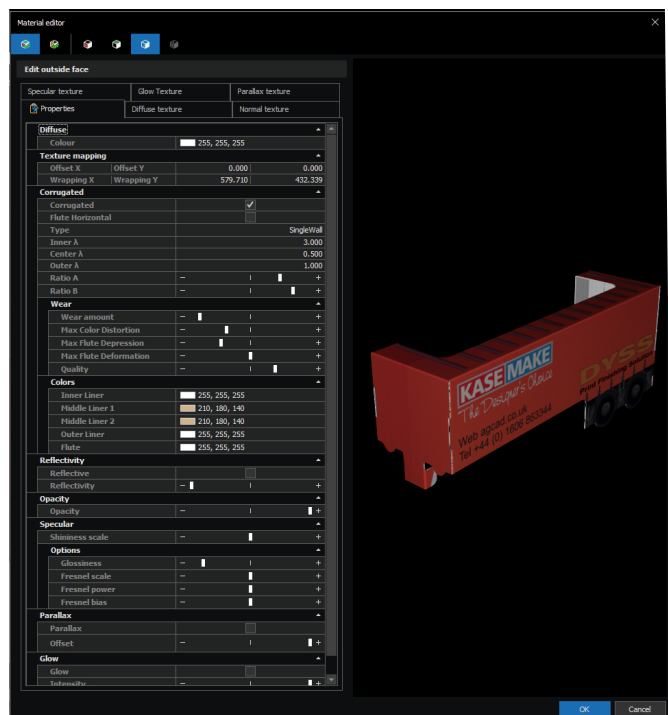
Linked and embedded artwork

Designers now have the option to link to the artwork used in their drawing, rather than embedding it. In this way it's possible to edit artwork outside KASEMAKE (using whatever program created it – Illustrator for instance).

When the drawing is opened (or the user clicks the refresh artwork button) then the artwork is reloaded including any modifications, saving design time in having to refold the 3D object with the new artwork.

A number of new effects can be applied to artwork in the 3D module to add realism and to demonstrate real world effects like foil blocking and spot UV.

Furthermore the liner quality on a sheet of corrugated board can be simulated; this is all controlled by the material editor dialog see image to the right.



3D Export options interactive and animated PDFs

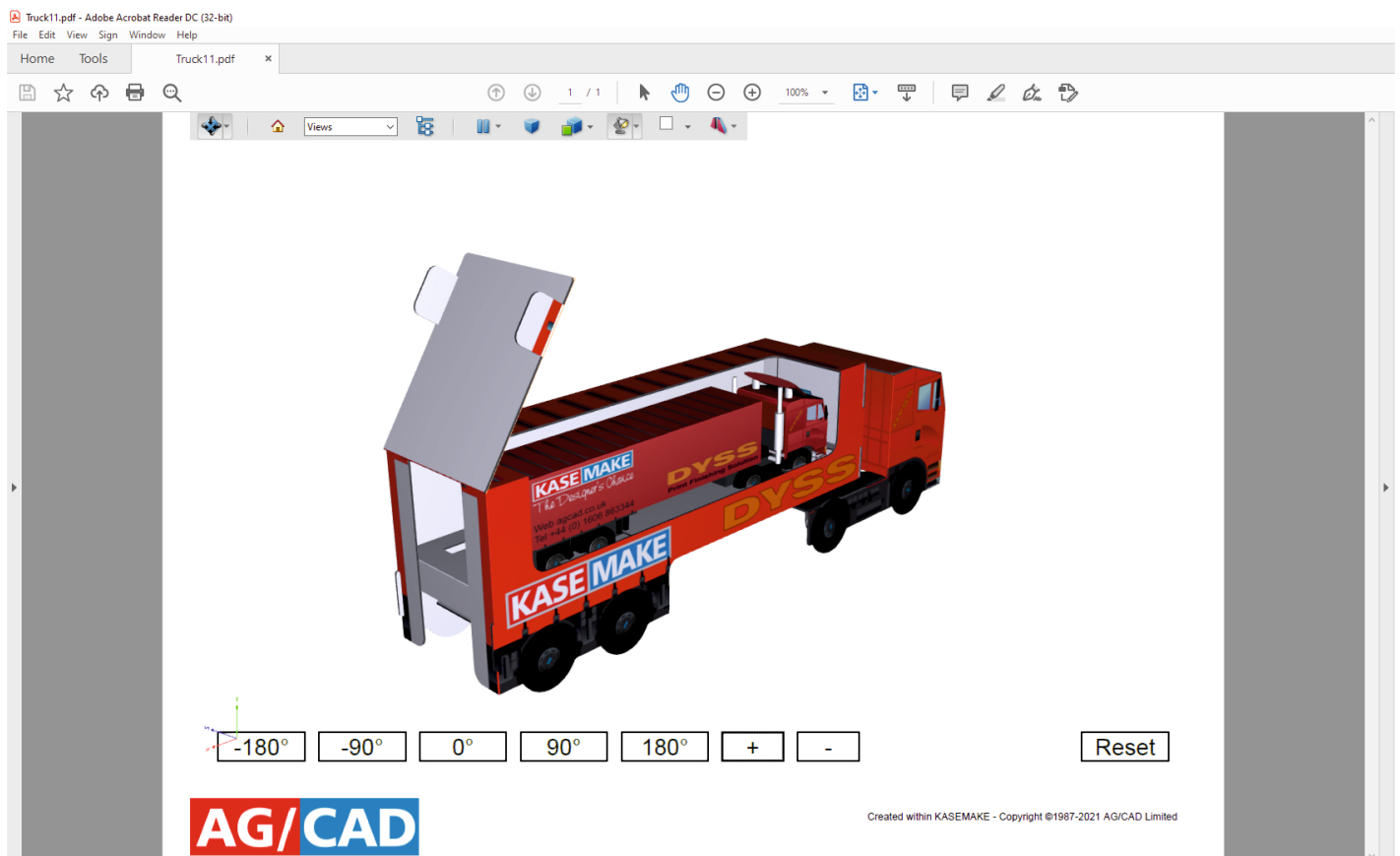
In KASEMAKE 12, not only can you export a 3D PDF that a customer can zoom in on and rotate, but you can send them an interactive PDF that enables them to fold and unfold panels themselves to see how your design is going to work. All this is done using the free Adobe Acrobat Reader. If that doesn't wow the customer sufficiently you can send them an animated PDF which contains a fully interactive movie showing how their design is assembled and folded.

Other than PDFs, KASEMAKE 3D can export MP4 movies which are more universally viewable than the older AVI and .MOV formats. Your movies can be watched on a PC, smart phone or tablet and quickly uploaded to YouTube if desired.

KASEMAKE still outputs via POV-Ray, WEBGL and in a whole host of proprietary 3D formats such as DAE, OBJ, STL, PLY, 3DS and many more. We can

also export to our own in3D software which allows you to produce complex 3D environments.

In addition KASEMAKE can import 3D geometry from a huge range of 3D software packages. In fact we can import over 40 different 3D file formats including DAE, OBJ, STP, STL, DXF, TER.



KASEMAKE standard functionality

KASEMAKE is a fully featured software package and always includes all of the following as standard:

- User friendly, intuitive interface.
- Intelligent and productive drafting tools designed specifically for packaging, display and sign/exhibition work. No need for construction lines.
- Over 800 resizable parametric design templates. FEFCO for corrugated boxes; ECMA for folding cartons; POP/POS for counter top and free-standing displays; plus many more. Modification and advanced creation of parametric templates allowing you to fine tune or build your own new specialised library of resizable designs.
- 2D import formats including Ai, PDF, EPS, CF2, DXF, DWG, DDES, DDES3, HPGL2D.
- Export formats including Ai, PDF, EPS, CF2, DXF, DWG, DDES, DDES3, HPGL, Highcon Euclid.
- Professional, customisable border frames for printing and document distribution.
- Job analysis and costing features Integrated
- Customisable SQL database for logging of job data, revision history storage, advanced search and report functionality, job allocation, scheduling, monitoring and live job status view.
- Simple and quick 2D to 3D conversion, with or without artwork for virtual mock-ups, proofing, assembly diagrams, etc.
- 3D animation with outputs in live animated PDF or MP4 movie format.
- Instant rendered 3D images with shadows, reflectivity and lighting effects for impressive realism.
- 3D object creation for modelling products such as cans, bottles, furniture, etc.
- 3D import of objects created by other 3D software.
- Full 3D environment builder allowing modelling of supermarkets, exhibition stands etc. With walk-through and advanced visualisation capabilities.
- Multi-up layout generation with intelligent nesting.
- Diemaking tools and forme costing.
- Compatibility with virtually all output devices, plotters, sample makers, rule processors, lasers and CNC machinery.



AG/CAD

For more information contact:

AG/CAD Limited
KASEMAKE House
Barlow Drive
Winsford
Cheshire
CW7 2JZ
T: 01606 863344
E: info@agcad.com
www.kasemake.com

KM
12